

ELEV 41

CAT A,B,C

WELLINGTON

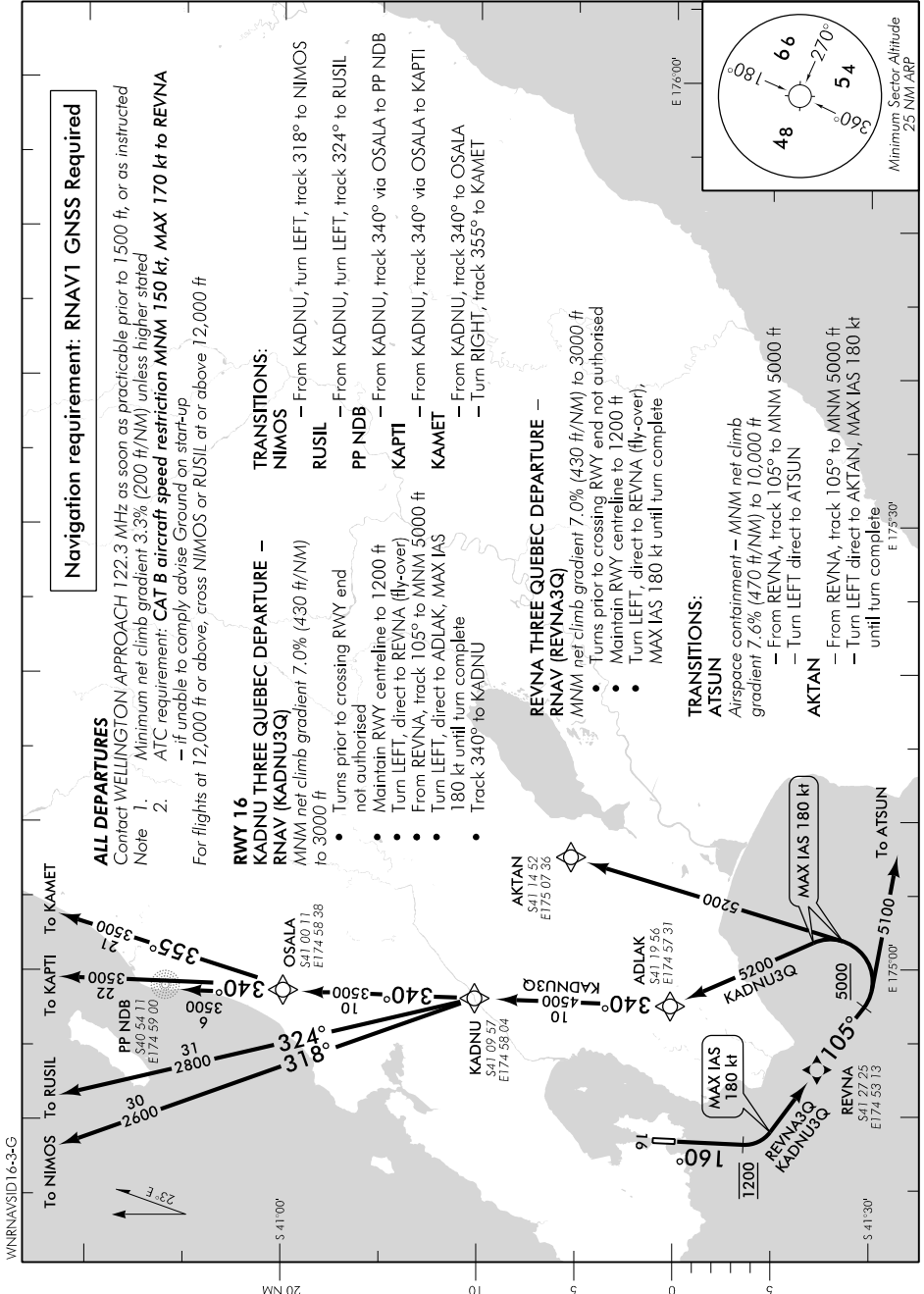
NZWN

RNAV SID RWY 16 (3)

WELLINGTON APPROACH: 122.3

TOWER: 118.8 125.25

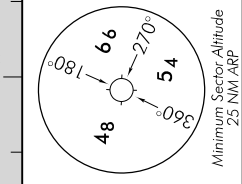
ATIS: 126.9



**Navigation requirement: RNAV1 GNSS Required**

**ALL DEPARTURES**  
 Contact WELLINGTON APPROACH 122.3 MHz as soon as practicable prior to 1500 ft, or as instructed  
 Note 1. Minimum net climb gradient 3.3% (200 ft/NM) unless higher stated  
 2. ATC requirement: **CAT B aircraft speed restriction MNM 150 kt, MAX 170 kt to REVNA**  
 — if unable to comply advise Ground on start-up  
 For flights at 12,000 ft or above, cross NIMOS or RUSIL at or above 12,000 ft

- TRANSITIONS:**
- NIMOS** — From KADNU, turn LEFT, track 318° to NIMOS
  - RUSIL** — From KADNU, turn LEFT, track 324° to RUSIL
  - PP NDB** — From KADNU, track 340° via OSALA to PP NDB
  - KAPT** — From KADNU, track 340° via OSALA to KAPT
  - KAMET** — From KADNU, track 340° to OSALA  
 — Turn RIGHT, track 355° to KAMET
- TRANSITIONS:**
- REVNA THREE QUEBEC DEPARTURE** —  
 • MNM net climb gradient 7.0% (430 ft/NM)  
 • Turns prior to crossing RWY end not authorised  
 • Maintain RWY centreline to 1200 ft  
 • Turn LEFT, direct to REVNA (fly-over)  
 • From REVNA, track 105° to MNM 5000 ft  
 • Turn LEFT, direct to ADLAK, MAX IAS 180 kt until turn complete  
 • Track 340° to KADNU
  - REVNA THREE QUEBEC DEPARTURE** —  
 • MNM net climb gradient 7.0% (430 ft/NM) to 3000 ft  
 • Turns prior to crossing RWY end not authorised  
 • Maintain RWY centreline to 1200 ft  
 • Turn LEFT, direct to REVNA (fly-over),  
 • Turn LEFT, direct to REVNA (fly-over),  
 • MAX IAS 180 kt until turn complete



Changes from 16 JUL 20: Procedures updated.

Effective: 16 JUN 22

© Civil Aviation Authority

WELLINGTON  
 RNAV SID RWY 16 (3)

ELEV 41

CAT A,B,C,D

NZWN

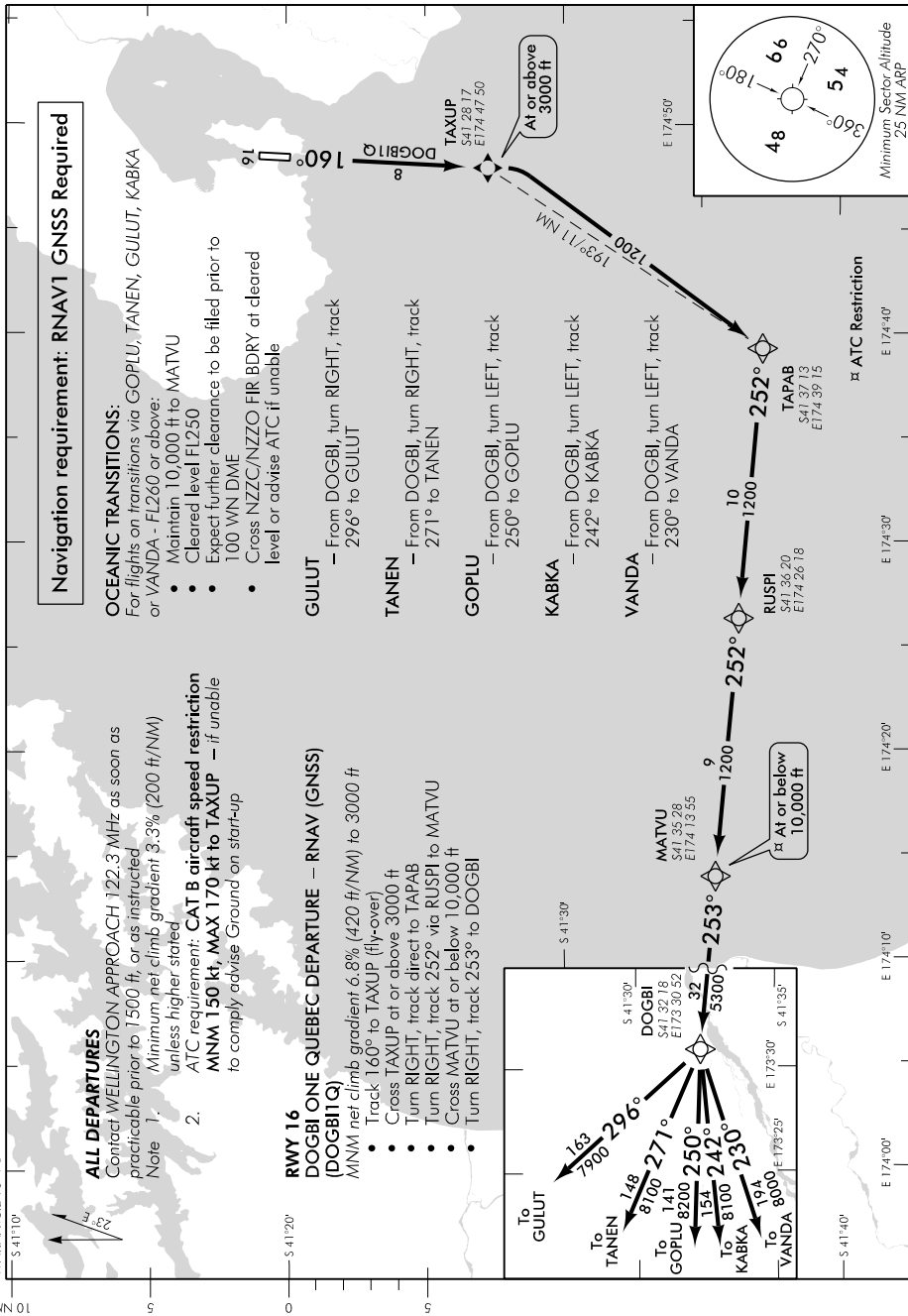
# WELLINGTON

## RNAV SID RWY 16 (4)

WELLINGTON APPROACH: 122.3

TOWER: 118.8 125.25

ATIS: 126.9



Effective: 30 JAN 20