

Changes from 12 AUG 21: Procedures reviewed.

Effective: 1 DEC 22

ELEV 41

NZWN

WELLINGTON APPROACH: 122.3

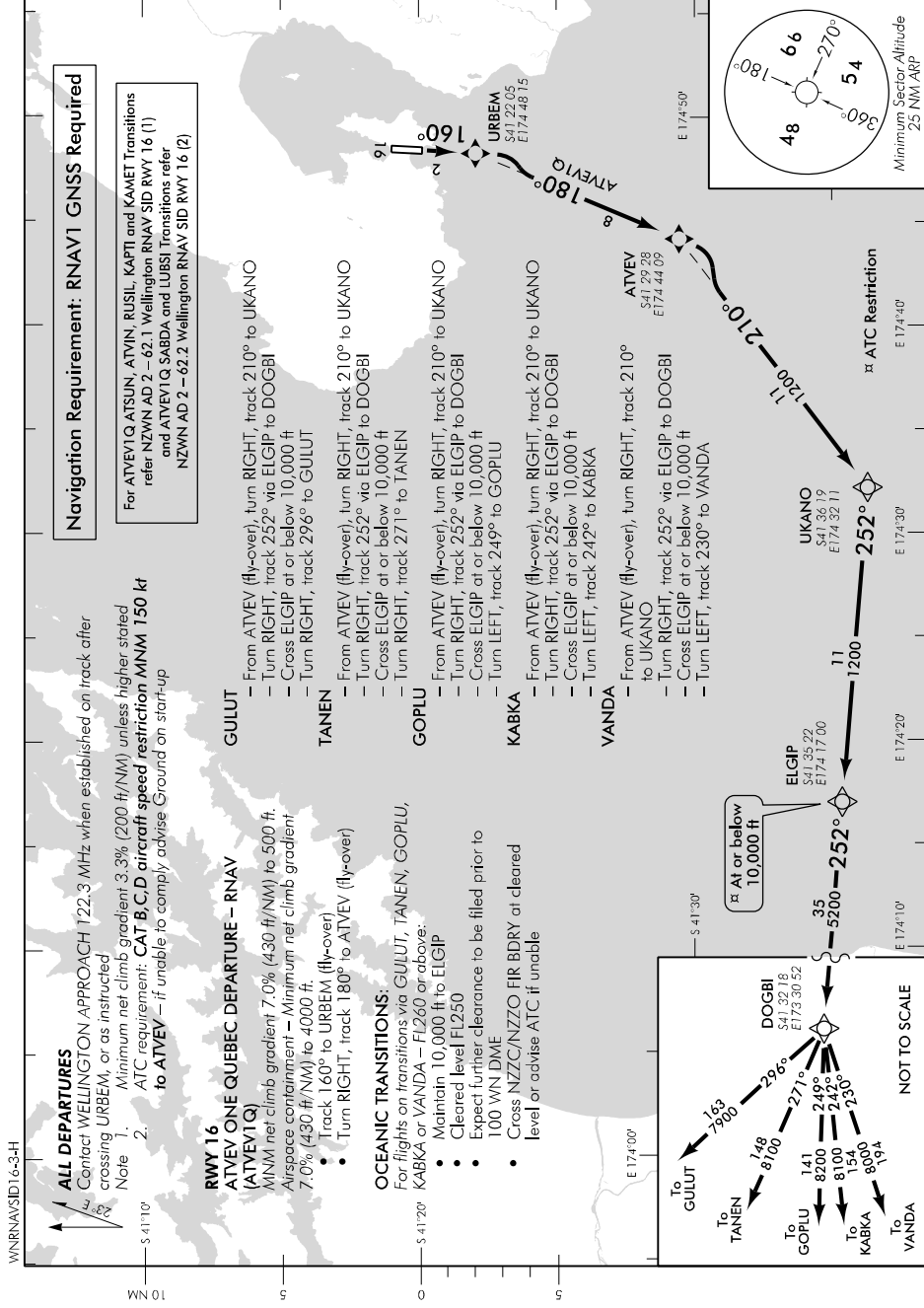
CAT A,B,C,D

TOWER: 118.8 125.25

**WELLINGTON**

**RNAV SID RWY 16 (3)**

ATIS: 126.9



**Navigation Requirement: RNAV1 GNSS Required**

For ATVEV1Q, ATVIN, RUSIL, KAPTI and KAMET Transitions refer NZWN AD 2 - 62.1 Wellington RNAV SID RWY 16 (1) and ATVEV1Q, SABDA and LUBSI Transitions refer NZWN AD 2 - 62.2 Wellington RNAV SID RWY 16 (2)

**ALL DEPARTURES**  
Contact WELLINGTON APPROACH 122.3 MHz when established on track after crossing URBEM, or as instructed

Note

- Minimum net climb gradient 3.3% (200 ft/NM) unless higher stated
- ATC requirement: CAT B,C,D aircraft speed restriction MNM 150 kt to ATVEV - if unable to comply advise Ground on start-up

**RWY 16 ATVEV ONE QUEBEC DEPARTURE - RNAV (ATVEV1Q)**

- MNM net climb gradient 7.0% (430 ft/NM) to 500 ft.
- Airspace containment - Minimum net climb gradient 7.0% (430 ft/NM) to 4000 ft.
- Track 160° to URBEM (fly-over)
- Turn RIGHT, track 180° to ATVEV (fly-over)

**OCEANIC TRANSITIONS:**

- For flights on transitions via GULUT, TANEN, GOPLU, KABKA or VANDA - FL260 or above:
- Maintain 10,000 ft to ELGIP
  - Cleared level FL250
  - Expect further clearance to be filed prior to 100 WN DME
  - Cross NZCC/NZZO FIR BDRY at cleared level or advise ATC if unable

**GULUT**

- From ATVEV (fly-over), turn RIGHT, track 210° to UKANO
- Turn RIGHT, track 252° via ELGIP to DOGBI
- Cross ELGIP at or below 10,000 ft
- Turn RIGHT, track 296° to GULUT

**TANEN**

- From ATVEV (fly-over), turn RIGHT, track 210° to UKANO
- Turn RIGHT, track 252° via ELGIP to DOGBI
- Cross ELGIP at or below 10,000 ft
- Turn RIGHT, track 271° to TANEN

**GOPLU**

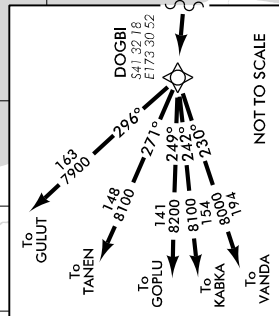
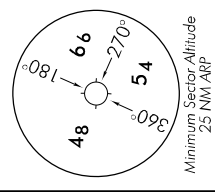
- From ATVEV (fly-over), turn RIGHT, track 210° to UKANO
- Turn RIGHT, track 252° via ELGIP to DOGBI
- Cross ELGIP at or below 10,000 ft
- Turn LEFT, track 249° to GOPLU

**KABKA**

- From ATVEV (fly-over), turn RIGHT, track 210° to UKANO
- Turn RIGHT, track 252° via ELGIP to DOGBI
- Cross ELGIP at or below 10,000 ft
- Turn LEFT, track 242° to KABKA

**VANDA**

- From ATVEV (fly-over), turn RIGHT, track 210° to UKANO
- Turn RIGHT, track 252° via ELGIP to DOGBI
- Cross ELGIP at or below 10,000 ft
- Turn LEFT, track 230° to VANDA



Changes from 16 JUN 22: Procedure reviewed.

Effective: 1 DEC 22

© Civil Aviation Authority

**WELLINGTON**  
**RNAV SID RWY 16 (3)**